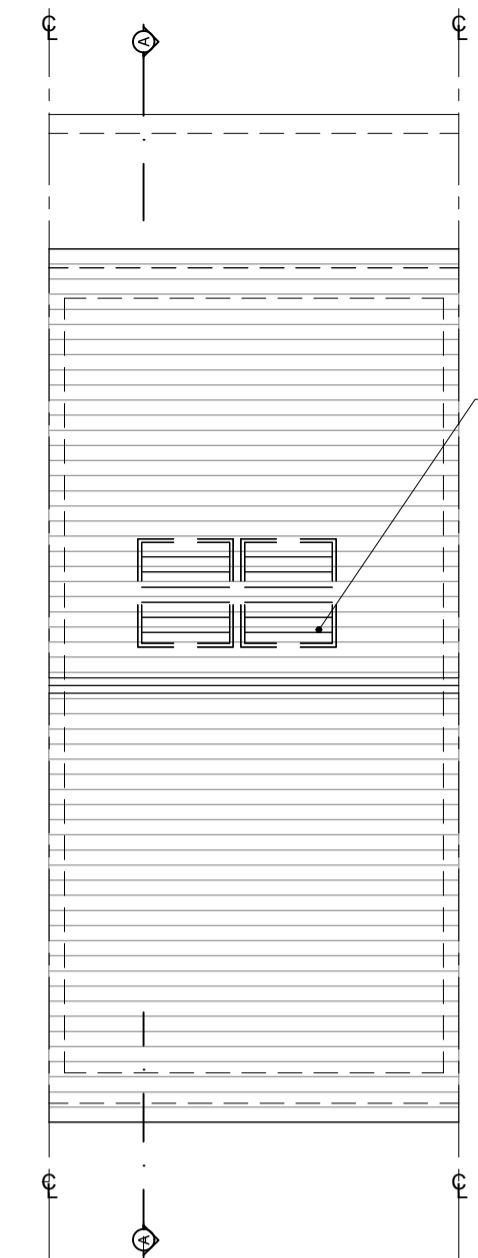


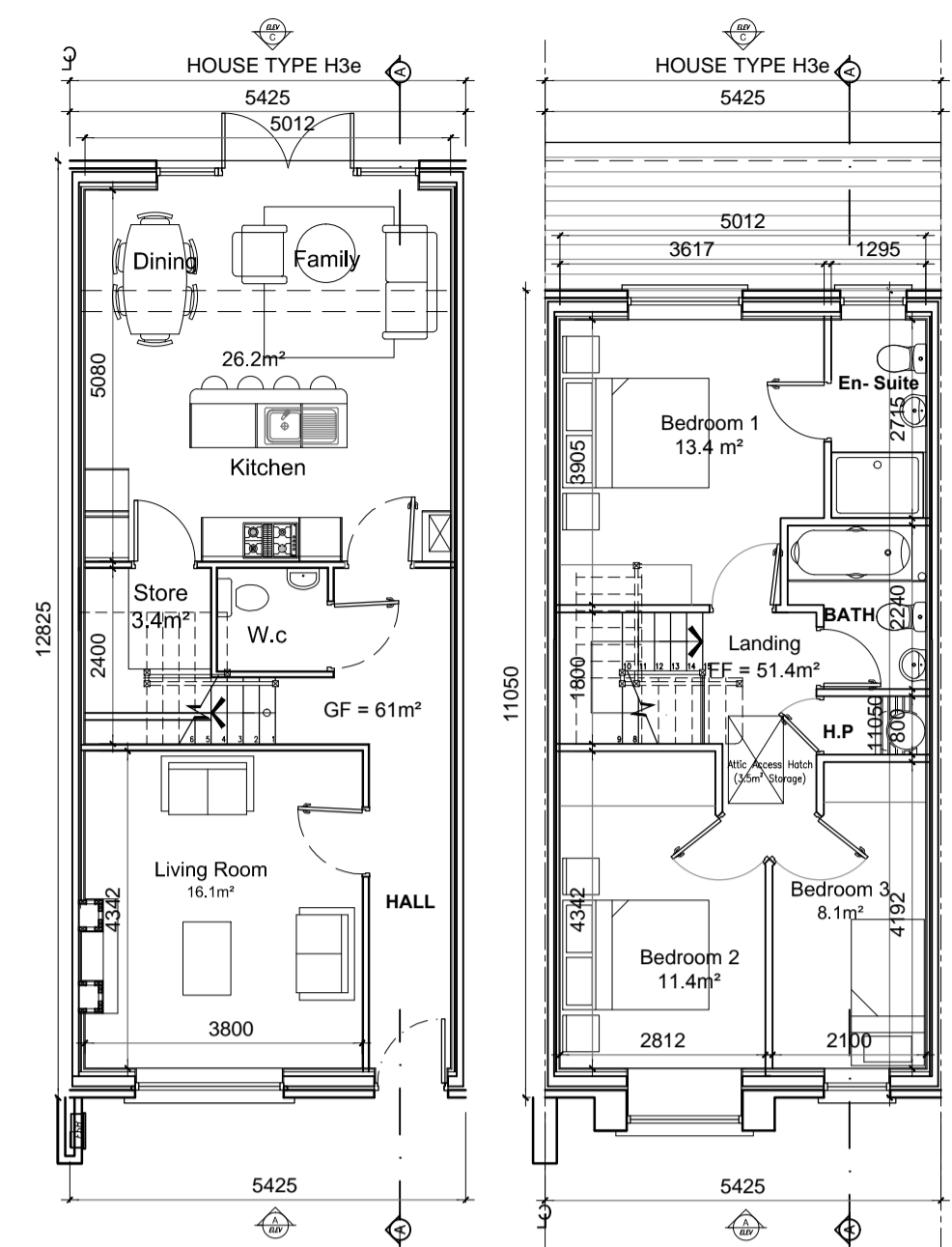
**Ground Floor Plan
Left Entry**
area 61m² / 657 ft²
O/ALL AREA 112.4m² / 1210ft²

**First Floor Plan
Left Hand Entry**
area 51.4m² / 553 ft²



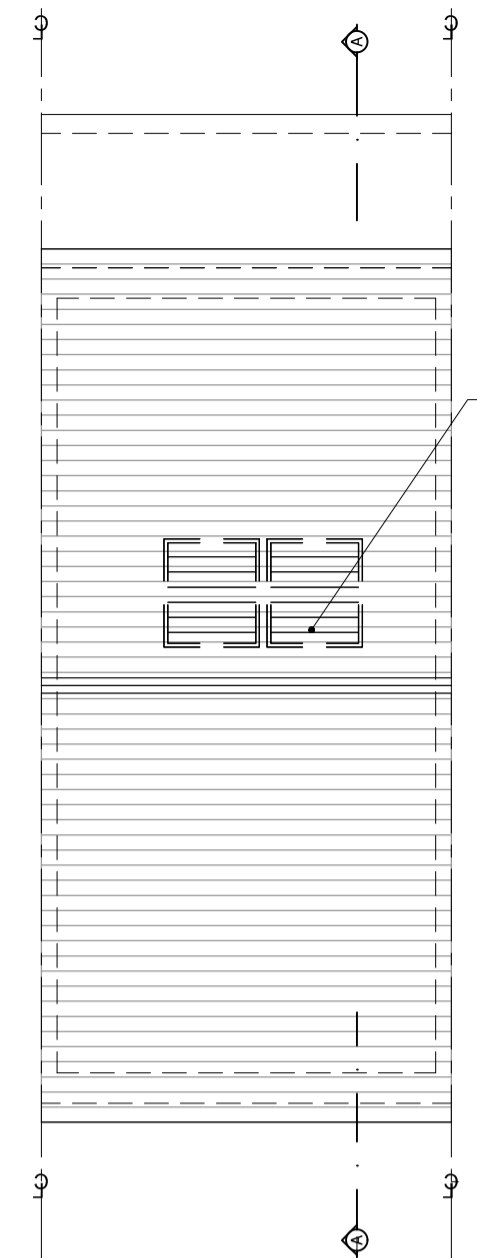
**Roof Plan
Left Entry**

Indicative Solar Panel or Photovoltaic panels indicated. Final Solar Panel Position Depends on House Orientation.



**Ground Floor Plan
Right Entry**
area 61m² / 657 ft²
O/ALL AREA 112.4m² / 1210ft²

**First Floor Plan
Right Entry**
area 51.4m² / 553 ft²



**Roof Plan
Right Entry**

Indicative Solar Panel or Photovoltaic panels indicated. Final Solar Panel Position Depends on House Orientation.

GENERAL NOTES

THIS DRAWING TO BE READ IN CONJUNCTION WITH ARCHITECT'S DRAWINGS, CONSULTANT ENGINEER'S DRAWINGS AND SPECIFICATIONS & LANDSCAPE ARCHITECT'S DRAWINGS
REFER TO ARCHITECT'S SITE PLAN PL002 and PL003 FOR NORTH ORIENTATION.
LEVELS GIVEN ON HOUSE TYPE DRAWINGS ARE GIVEN TO A LOCAL ABSOLUTE ZERO LEVEL. FOR SPECIFIC LEVELS DEPENDING ON INDIVIDUAL UNIT LOCATION, REFER TO ARCHITECT'S CONTEXT SECTIONS AND ENGINEER'S DRAWINGS WHERE LEVELS ARE ALL GIVEN IN RELATION TO LAND SURVEYOR'S BENCHMARK BASED ON MALIN HEAD DATUM LEVEL.

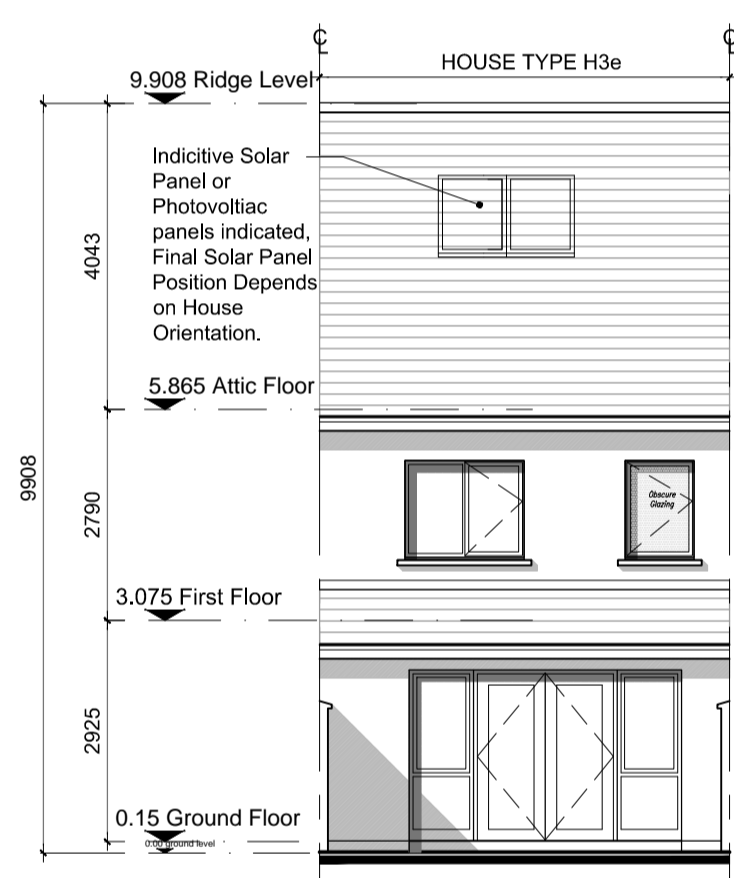
REFER TO SITE LAYOUT PLAN FOR NORTH ORIENTATION
REFER TO CONSULTING ENGINEERS DRAWINGS FOR BLOCK LEVELS

NOTES ON FINISHES:

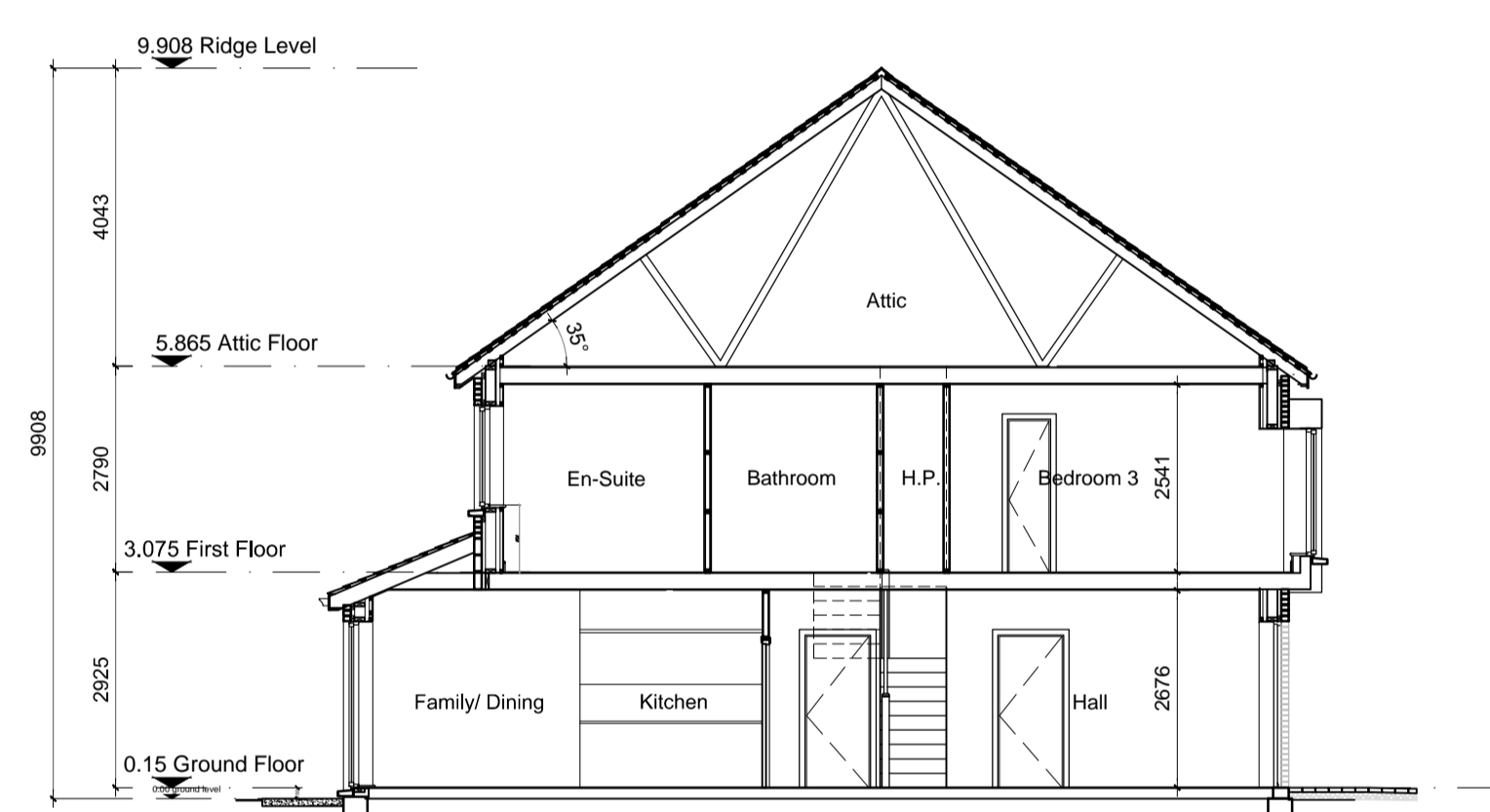
- ROOF: TO BE FINISHED IN SLATE OR CONCRETE ROOF TILES IN SELECTED COLOUR OR SIMILAR APPROVED.
- WALLS: SELECTED CLAY BRICKWORK WHERE INDICATED OTHERWISE PAINTED SAND / CEMENT RENDER OR SELF COLOURED RENDER OR DRY-DASH TO CONCEALED SIDE GABLES.
- JOINERY: ALL WINDOWS AND DOORS, FRAMES AND LEAVES, TO BE ALUMINIUM POWDER-COATED TO APPROVED COLOUR OR UPVC OR PAINTED TIMBER TO APPROVED COLOUR. OBSCURE GLAZING WHERE INDICATED TO SENSITIVE WINDOWS.
- RAINWATER GOODS: GUTTERS, DOWNPIPES, AND FIXINGS TO BE UPVC OR ALUMINIUM POWDER COATED TO SELECTED COLOUR TO MATCH ROOF SLATES
- * SOLAR PANELS: INDICATIVE SOLAR PANEL POSITION, FINAL SOLAR PANEL POSITION DEPENDS ON HOUSE ORIENTATION. THE SOLAR PANELS SHOWN ARE A PROVISIONAL OPTION TO SATISFY RENEWABLE ENERGY REQUIREMENTS OF BUILDING REGS PART L. SOLAR PANELS MAY BE OMITTED IN FAVOUR OF ALTERNATIVE RENEWABLE ENERGY SOURCE.



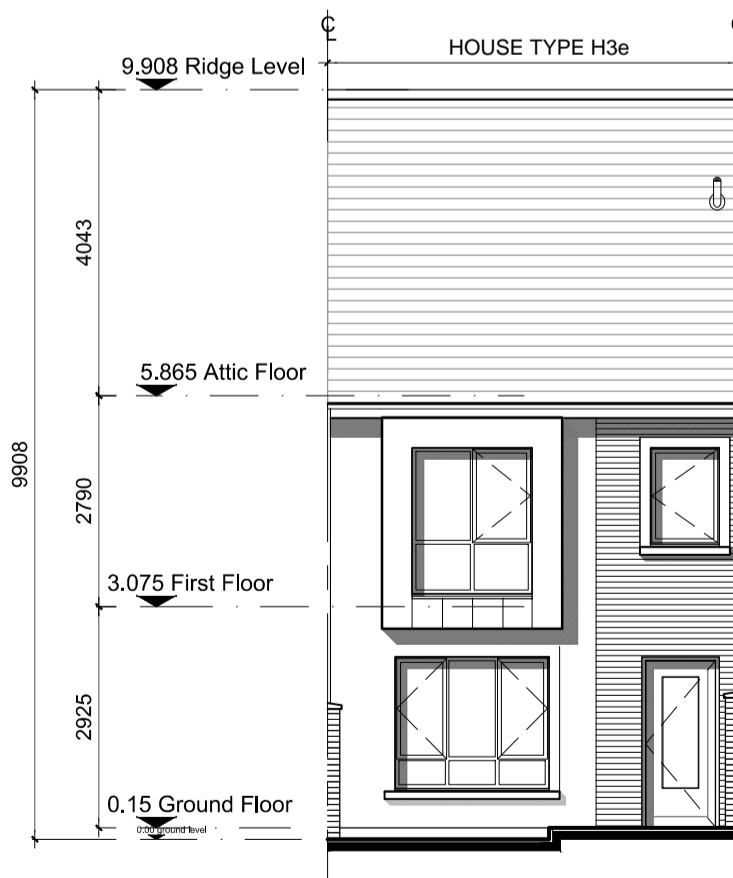
**Front Elevation 'A'
Left Entry**



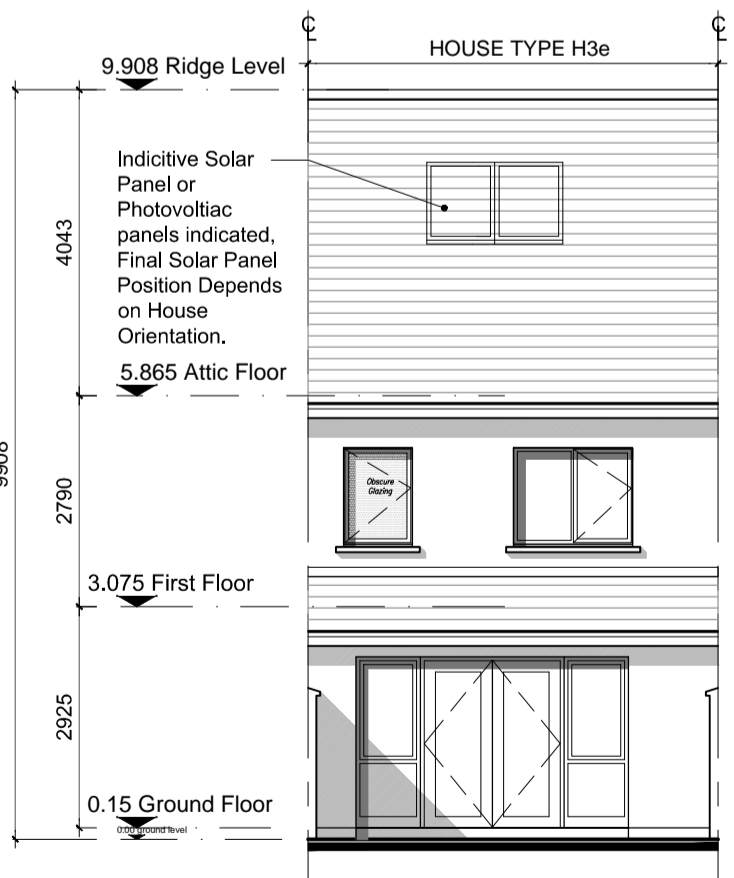
**Rear Elevation 'C'
Left Entry**



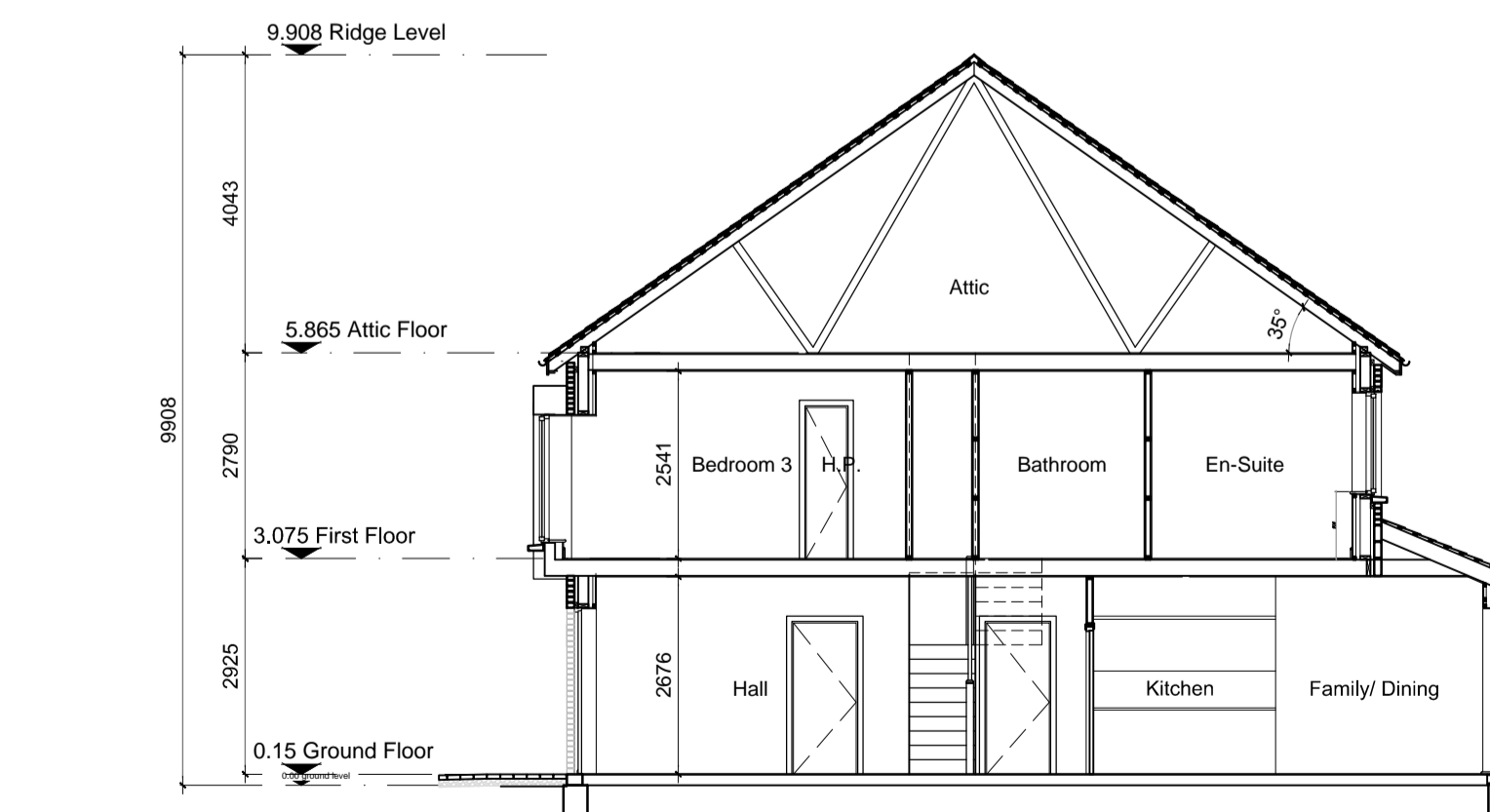
SECTION A-A



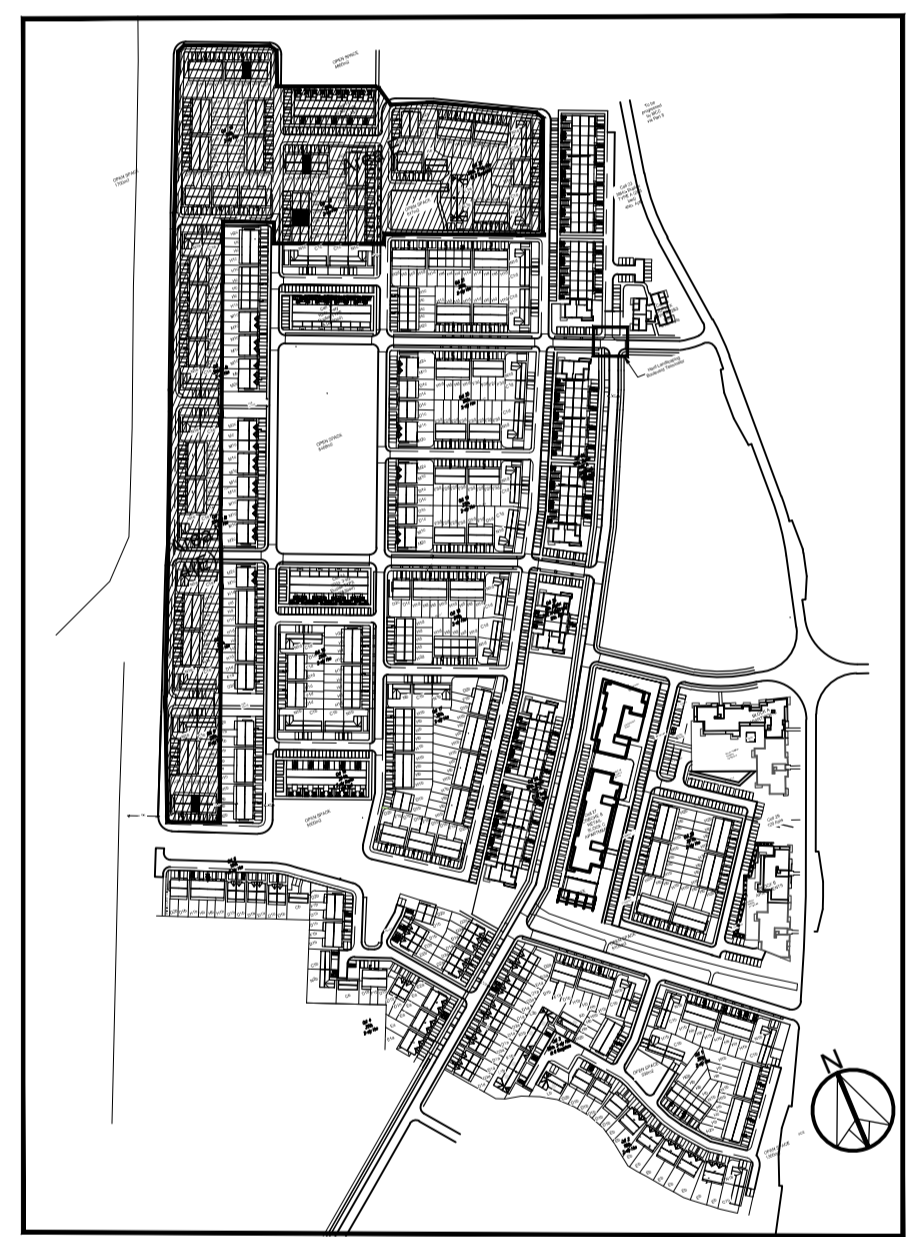
**Front Elevation 'A'
Right Entry**



**Rear Elevation 'C'
Right Entry**



SECTION A-A



KEY PLAN - NTS

Character Area E

H3e	HOUSE TYPE H3e	Mid Terrace
	2 STOREY	112.4 m² / 1,210ft²
	3 BED	No of Units: 5

NOTES:

DO NOT SCALE FROM DRAWINGS. WORK TO FIGURED DIMENSIONS ONLY. ARCHITECT TO BE NOTIFIED OF ALL DISCREPANCIES.

REVISIONS		
DATE	DESCRIPTION	No.

M CORM
M: CROSSAN O'ROURKE MANNING ARCHITECTS

PROJECT TITLE: **Dunshaughlin East SHD**
DRAWING TITLE: **House Type H3e - Left & Right Entry Plans, Elevations, & Section**

DATE: Dec'18
SCALE: 1:100@A1
JOB NO: 16028.1SHD148
DRAWN BY: DB
REVISION: